





WINDSHIRE PARK METROPOLITAN DISTRICT Nos. 1-2

SECTIONS 7 AND 18, TOWNSHIP 6 NORTH, RANGE 67 WEST,
TOWN OF WINDSOR, COUNTY OF WELD, STATE OF COLORADO

 Posting Locations

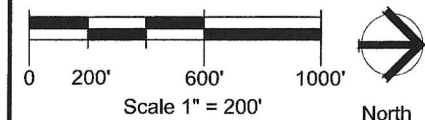
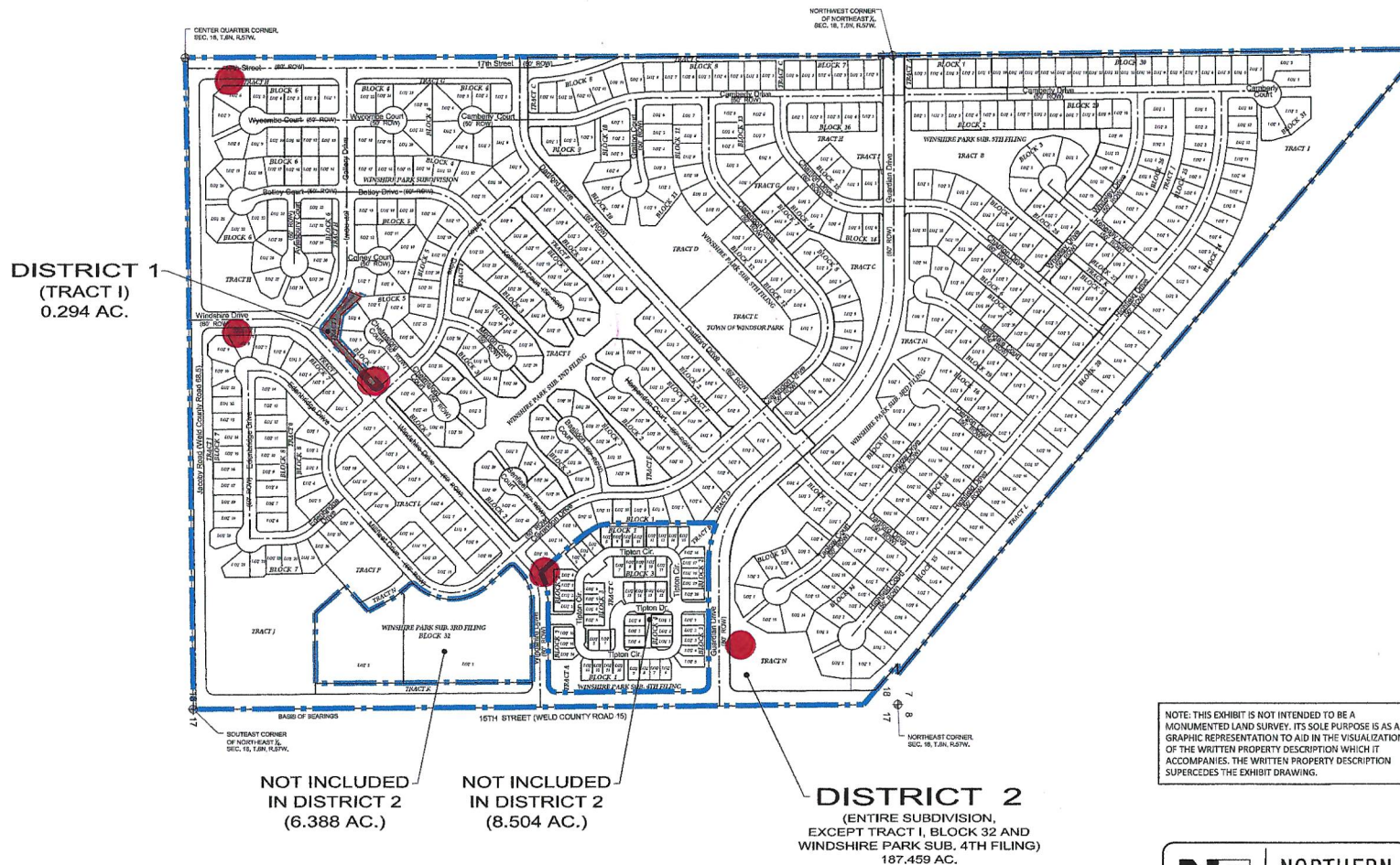
Legend:

-  -District "Number"
-  -Section Corner
-  -District 1
-  -District 2

District Acreage:

District 1 = 12,810 Sq.Ft / 0.294 AC.

District 2 = 8,165,711 Sq.Ft. / 187.459 AC.



February, 2019

12-7-21

WINDSHIRE PARK
METROPOLITAN
DISTRICT Nos. 1-2

DISTRICT MAP

NOTE: THIS EXHIBIT IS NOT INTENDED TO BE A
MONUMENTED LAND SURVEY. ITS SOLE PURPOSE IS AS A
GRAPHIC REPRESENTATION TO AID IN THE VISUALIZATION
OF THE WRITTEN PROPERTY DESCRIPTION WHICH IT
ACCOMPANIES. THE WRITTEN PROPERTY DESCRIPTION
SUPERCEDES THE EXHIBIT DRAWING.

