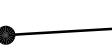
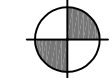




WINDSHIRE PARK METROPOLITAN DISTRICT Nos. 1-2

SECTIONS 7 AND 18, TOWNSHIP 6 NORTH, RANGE 67 WEST,
TOWN OF WINDSOR, COUNTY OF WELD, STATE OF COLORADO

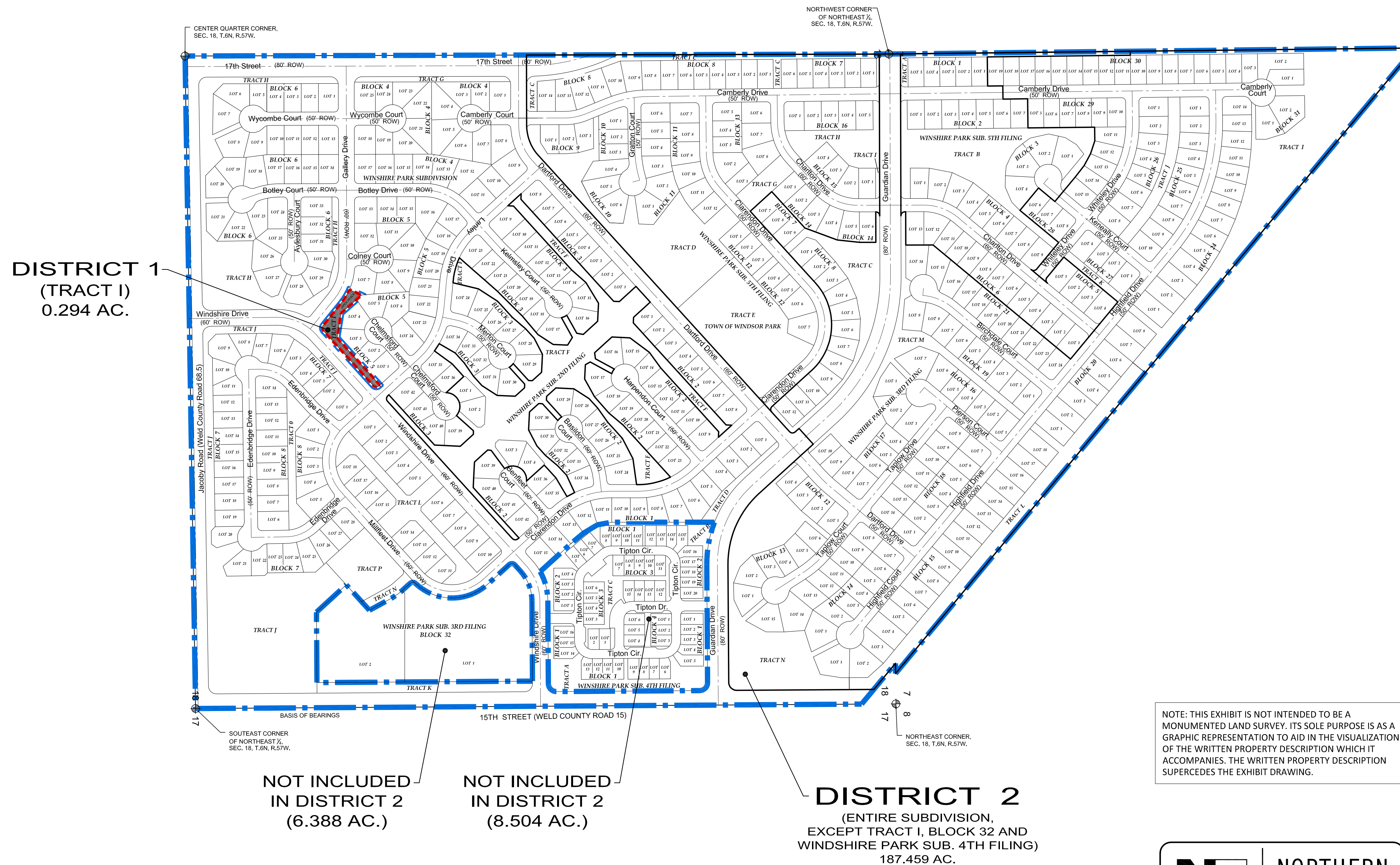
Legend:

-  -District "Number"
-  -Section Corner
-  -District 1
-  -District 2

District Acreage:

District 1 = 12,810 Sq.Ft / 0.294 AC.

District 2 = 8,165,711 Sq.Ft. / 187.459 AC.



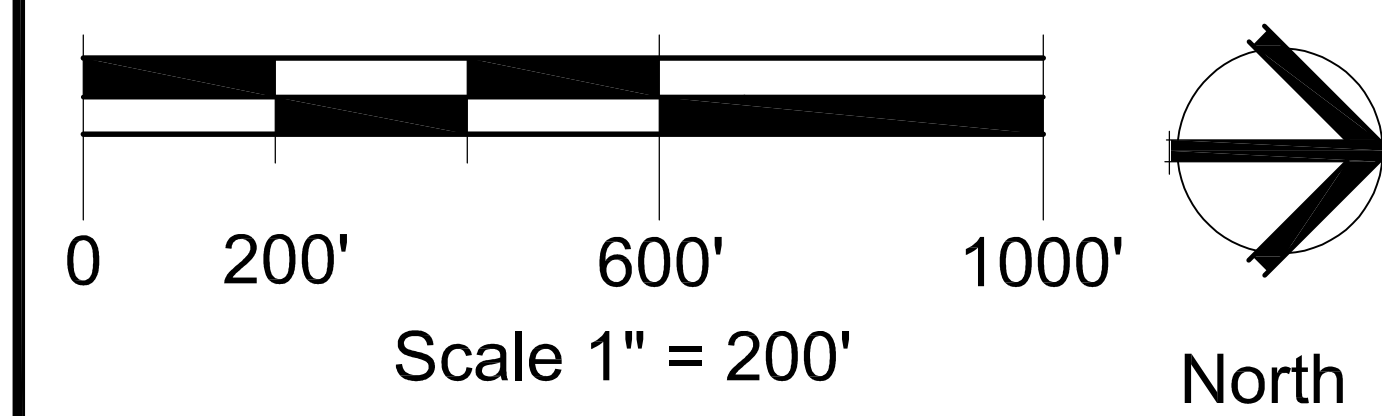
DISTRICT 1
(TRACT I)
0.294 AC.

NOT INCLUDED
IN DISTRICT 2
(6.388 AC.)

NOT INCLUDED
IN DISTRICT 2
(8.504 AC.)

DISTRICT 2
(ENTIRE SUBDIVISION,
EXCEPT TRACT I, BLOCK 32 AND
WINDSHIRE PARK SUB. 4TH FILING)
187.459 AC.

NOTE: THIS EXHIBIT IS NOT INTENDED TO BE A MONUMENTED LAND SURVEY. ITS SOLE PURPOSE IS AS A GRAPHIC REPRESENTATION TO AID IN THE VISUALIZATION OF THE WRITTEN PROPERTY DESCRIPTION WHICH IT ACCOMPANIES. THE WRITTEN PROPERTY DESCRIPTION SUPERCEDES THE EXHIBIT DRAWING.



February, 2019

WINDSHIRE PARK METROPOLITAN DISTRICT Nos. 1-2

DISTRICT MAP

*SUBSEQUENT WINDSHIRE PARK FILINGS SHOWN HEREON FOR REFERENCE ONLY

NE NORTHERN ENGINEERING
FORT COLLINS: 301 North Howes Street, Suite 100, 80501 970.221.4158
GREELEY: 820 8th Street, 80631 northernengineering.com